

# Pinole Historical Society Newsbriefs

Fall 2017



P.O. Box 285, Pinole, CA 94564

[www.PinoleHistoricalSociety.org](http://www.PinoleHistoricalSociety.org)

[info@PinoleHistoricalSociety.org](mailto:info@PinoleHistoricalSociety.org)

## In this issue

**President's Message**  
Expanding our  
programming focus

— Page 3 —

**Veterans Day Memorial**  
Saturday, November 11

— Page 4 —

**November 3 program**  
Travel the de Anza  
National Historic Trail

— Page 6 —

**George Vincent**  
Depot days in Old Pinole

— Page 8 —

**Local history books**  
for sale

— Pages 12 and 14 —

**PHS membership**  
application

— Page 15 —

**Shirley  
Ramos  
(right)**  
presents  
**Pinole  
Historical  
Society  
secretary  
Jo Ann  
Gannotti**  
with a  
\$1,000  
check.



## PHS RECEIVES \$1,000 DONATION

**T**he Pinole Historical Society has received a \$1,000 donation from the Pinole-Hercules Old School Reunion Committee. The Hercules Historical Society also received a \$1,000 check.

After nine reunions, the committee decided there would be no more.

"We had money left in the bank account and we wanted it to go to preserve the history of the Old School," committee member Shirley Ramos said. "I suggested donating \$1,000 to each society and the committee agreed unanimously. We know that both historical societies will keep the history of our Old School alive."

The other members of the committee are Alene Wessman, Marge Dean, Beverly Demorest, and Bob and Marilyn Patterson.

"We are very grateful for this generous donation," said Pinole Historical Society president Jeff Rubin.

"We will put this money to good use as we plan for the establishment of the Pinole History Museum, which definitely will keep the history of the Old School alive."

Published quarterly by the Pinole Historical Society

## WHERE TO FIND NEWSBRIEFS

Pick up *Newsbriefs* at these locations:

AccuTech Auto Care, A.D. Dern Insurance, The Alley Cafe, Antlers Tavern, Bank of the West, Bay Park Retirement Residence, The Bear Claw, Big O Tires, Blue Sky Sports, Cafe Soleil, China House, Cindy's Shear Cuts, Coldwell Banker Bartels Realtors, Crocketts Premier Auto Body, East Bay Coffee Company, George A. Egan, CFP, The Embers, Farmers Insurance (Carol White), Garden of Gems, Good Butter Bakery, Grocery Outlet, Happy Sashimi, Headquarters Salon, Hercules Fitness, Kaiser Permanente Medical Office Building, K & L Automotive, Kendall Financial Services, Ladies Workout Express, Letcher Bros. Auto Repair, Marrah Molina Therapy, Mechanics Bank, Douglas Oliver, D.D.S., Oliver's Hardware, Attorney Donald E. Patterson, Pinole City Hall, Pinole Creek Cafe, Pinole Hearing Aid Center, Pinole Library, Pinole Paws, Pinole Police Department, Pinole Senior Center, Pinole Senior Village, Pinole Valley Community Church, Promo Zion, Realty World (Viktor Manrique), Ristorante Due Rose, Joel Ross, M.D., Sam's Dog House, Sequoia Real Estate, Chiyo Shidara, D.D.S., Sprouts Farmers Market, State Farm Insurance (Mark Bucklew), State Farm Insurance (Rick Chalk), St. Joseph School, Sugar City Building Materials, Sunshine Floor Covering, Taqueria Sanchez, Tenax Law Group, 10th Inning Baseball Cards, The New Deli, The Red Onion, The UPS Store, Tina's Place, TMF Accounting Services, Top Floor Salon, Albert M. Tsang, D.D.S., West Contra Costa Transit Authority, Windermere Rowland Realty, Wilson & Kratzer Mortuaries, and Zio's Pasta Pronto.

It's also posted on the PHS website (click on NEWSLETTER in the menu bar).

**FOR ADVERTISERS:** 2,000 printed copies of *PHS Newsbriefs* are distributed every quarter, generating readership among thousands of Pinole and West County residents. Hundreds more receive the newsletter directly from the PHS via its database and website.

**If you're interested in advertising, contact Jeff Rubin at [info@PinoleHistoricalSociety.org](mailto:info@PinoleHistoricalSociety.org) or (510) 724-9507.**

## PHS CALENDAR

### ONGOING

#### **November 3 program: "Traveling the Juan Bautista de Anza National Historic Trail,"**

presented by the National Park Service. The public is invited to this FREE event from 6:30 to 8 p.m. in conference rooms 2A and 2B of the Kaiser Permanente Medical Office Building, 1301 Pinole Valley Road. Refreshments will be served.

**November 8, January 10, February 14: Monthly Board of Directors meeting.** The public is invited to attend and speak on any of the items discussed at these meetings. Pinole Senior Center, 6:30 to 8 p.m.

**PHS booth at Pinole Farmers' Market.** We are at the farmers' market every other Saturday from April through December. Please stop by and say hello.

## PinoleHistoricalSociety

**Board of Directors:** Jeff Rubin, President; George Vincent, Vice President; Mary McMains, Treasurer; Jo Ann Gannotti, Secretary; Melissa Lawton, Norma Martinez-Rubin, Carol White. **Directors Emeritus:** Marcia Kalapus, Jack Meehan. **Newsletter Editor:** Jeff Rubin.

## 2018 PHS MEETING DATES

**February 2:** Program to be announced.

**May 4:** Program to be announced.

**September 7:** Program to be announced.

**November 2:** Program to be announced.

All meetings are held from 6:30-8 p.m. in conference rooms 2A and 2B of the Kaiser Permanente Medical Office Building, 1301 Pinole Valley Road.

For more information, call (510) 724-9507, e-mail [info@pinolehistoricalsociety.org](mailto:info@pinolehistoricalsociety.org), or visit our website at [www.pinolehistoricalsociety.org](http://www.pinolehistoricalsociety.org).

## PHS VIDEOS ON CITY OF PINOLE WEBSITE

**M**iss one of our history programs on Pinole Community TV? Don't despair. The city's website has a dedicated section devoted to PINOLE HISTORY on its "Videos Online" page.

You can view the numerous PHS programs right on your computer. Go to the city's website [www.ci.pinole.ca.us/about/videos.html](http://www.ci.pinole.ca.us/about/videos.html) and scroll down to PINOLE HISTORY.

You'll find our interviews, Veterans Day programs, George Vincent's two walking tours of historic downtown Pinole, and the very fine PCTV-produced, 12-part series based on the Historic Walking Tour brochure. It's great TV!

The historical society has recorded interviews with several prominent Pinole citizens. Among the videos on the city's website are interviews with Ed LeFebvre, Charlotte (Fernandez) Shea,

former fire chief Alex Clark, and former mayors Jack Meehan and Tom Cutino.

PHS program videos include:

- School Bell dedication.
- Japanese-American internment.

- Bars, Barbers, and Characters.
- A Flood of Memories.
- School Bells and Ink Wells.

We thank Bob Kopp, who recorded most of these events for the society.

# President's Message

**Jeff Rubin, President, Pinole Historical Society**

## FOCUS ON LOCAL AND REGIONAL PROGRAMS

One of the goals of the society over the last few years has been to broaden our offerings at our quarterly meetings to include not only Pinole-related programs, but also programs about other Bay Area communities and historical events.

Our November 3 program — *Traveling the de Anza National Historic Trail* — reflects our desire to expand our vision beyond the city's borders and present interesting topics that affected the entire region, and thus Pinole, as well.

For example, the 1772 expedition of Father Juan Crespi and explorer Pedro Fages was the first by the Spanish to discover what was to become Pinole. The Native Americans gave the Spanish a gift of a ground foodstuff made of acorns, seeds, and grain, which Fr. Crespi recorded as "pinolli," an Aztec word for flour meal.

The next Spaniards in the area were part of the Anza expedition; Padre Pedro Font, who was part of that expedition, wrote of "a fair-sized Indian village on an arroyo (Pinole Creek) whose men and women were happy to see us."

While our priority is local — such as the well-attended program presented by Susan Fernandez

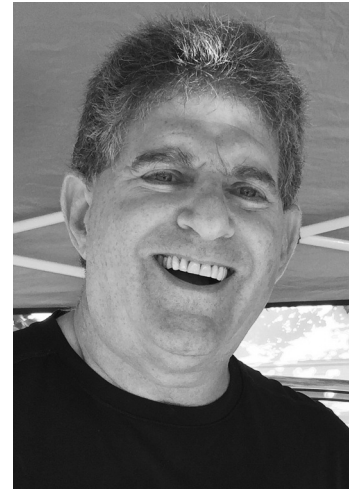
on Bernardo Fernandez in February, *Digging up History* (2014), and *Baseball in Pinole* (2016) — we've had great response to the programs we've presented on regional topics, such as the internment of Japanese-Americans during World War II (2012), the Presidential Rosies (2014), and the 100th anniversary of the Panama-Pacific International Exposition (2015).

We've also presented programs about other areas of Contra Costa County, such as the history of the maritime industry in Contra Costa, the history of the San Ramon Valley, and September's program on the Bay Bridge Troll.

The response to these programs was very positive, and some of them drew large crowds. (Well, for us they were large.)

We're working on our programming for 2018 and beyond, and we expect we will have an eclectic mix of meetings that may surprise and delight you.

As always, we thank you for your support. Please come to our meetings — and bring your friends.



**Jeff Rubin**



(510) 235-4056

LICENSE No. 421131

2207 EMERIC AVENUE  
SAN PABLO, CA 94806



Mon.-Fri. 9-3pm  
Closed Weekends

624 San Pablo Ave. / 510-724-5335  
thenewdeli.com

Homemade Soups, Salads, Vegetarian & Traditional Fare



Civic Center Chapel, Richmond (510) 232-4383 • FD195  
Chapel of the Mission Bells, San Pablo (510) 232-6552 • FD881  
Hosselkus Chapel, Crockett (510) 799-1411 • FD933



1918-2017  
99 years  
Serving Families



www.wilsonkratzermortuaries.com



Regency

2216 Railroad Avenue • Hercules, CA 94547

Dir: 510-467-4911

Bus: 510-724-0700

Fax: 510-724-0702

Email: ViktorManrique@aol.com

www.RealtyWorldRegency.com

Each office independently owned and operated.

**Viktor Manrique**  
REALTOR  
DRE #01224855





**Saturday, November 11**

# HONOR OUR VETERANS IN FERNANDEZ PARK

**T**he Pinole Historical Society will conduct its 10th annual Veterans Day Memorial and Flag Retirement Ceremony on Friday, November 11, at 11 a.m. in Fernandez Park.

Songs, speeches, remembrances, tributes, and the retirement of worn U.S. flags by the Boy Scouts will highlight the hour-long ceremony.

Boy Scout Troop 86, West Contra Costa Girl Scouts, Veterans of Foreign Wars, St. Joseph School students and choir, the Pinole Valley High School Marching Band, and elected officials, including Pinole Mayor Debbie Long and Supervisor John Gioia, will participate.

Please bring your worn and tattered flags to the ceremony, where they will be retired with proper respect. There is no charge to retire a flag.

For more information, call (510) 724-9507 or e-mail [info@pinolehistoricalsociety.org](mailto:info@pinolehistoricalsociety.org).

*The Pinole Historical Society  
and the  
City of Pinole*  
invite you to participate in the  
10th annual  
**VETERANS DAY MEMORIAL AND  
FLAG RETIREMENT CEREMONY**  
Saturday, November 11, 2017  
11 a.m.-noon, Fernandez Park, Pinole


Please join us as we honor our veterans,  
past and present, living and deceased.

*To donate a flag for the retirement ceremony,  
please call (510) 724-9507  
or e-mail [info@PinoleHistoricalSociety.org](mailto:info@PinoleHistoricalSociety.org)*

---

For more information, contact the  
Pinole Historical Society  
[www.PinoleHistoricalSociety.org](http://www.PinoleHistoricalSociety.org)  
[info@PinoleHistoricalSociety.org](mailto:info@PinoleHistoricalSociety.org)

Pinole  
**Historical**  
Society



sushi • grill • sake • dessert

2718 pinole valley road • pinole, california 94564  
510.758.8881 [www.eathappysashimi.com](http://www.eathappysashimi.com)



## China House

RESTAURANT

Mandarin & Szechuan Cuisine

Open 7 Days A Week

Mon~Sun: 11:30am~9:30pm.

**Tel: (510) 741-8788**

1971 San Pablo Avenue, Pinole, CA 94564

## School Bells and Ink Wells

MAIL TO: GEORGE VINCENT, 1209 HERCULES AVE., HERCULES, CA 94547

Name \_\_\_\_\_

Address \_\_\_\_\_

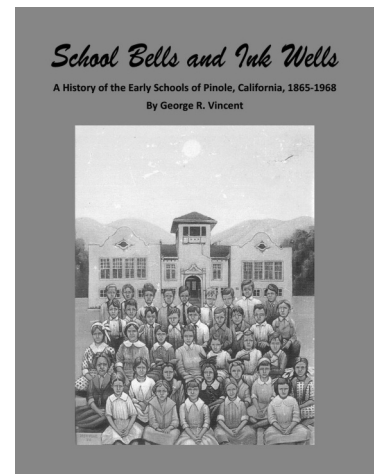
City \_\_\_\_\_ State \_\_\_\_ Zip \_\_\_\_\_

Phone ( ) \_\_\_\_\_ E-mail \_\_\_\_\_

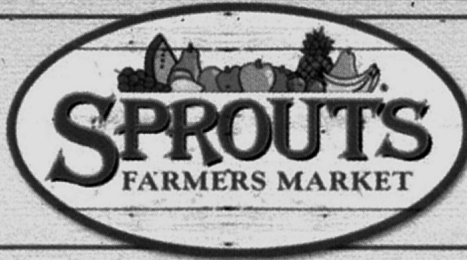
# of books (\$30 per book, includes sales tax and postage) \_\_\_\_\_

**TOTAL: \$** \_\_\_\_\_

Mail your check, payable to **George Vincent**







**Store #401**

**Pinole Valley Rd & 80 Freeway**



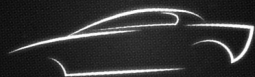
**1300 Pinole Valley Road • (510) 640-8111**

**Why not advertise with us?**

Call (510) 724-9507 or e-mail [info@pinolehistoricalsociety.org](mailto:info@pinolehistoricalsociety.org) for information and rates.

*Mike Letcher*  
Owner

636 San Pablo Ave.  
Pinole Ca 94564  
**510-724-2335**



*Letcher Bros.*  
*Auto Repair*

Email  
[letcherbros@gmail.com](mailto:letcherbros@gmail.com)  
Website  
[letcherbros.com](http://letcherbros.com)

*You are @ Alley Cafe*



**Hours**

**7:30 a.m. to 2 p.m.**  
**Seven days a week**

2265 Pear Street • Pinole, CA 94564  
(510) 724-5312

**Geoff Torretta**

**A Pinole Landmark**

**Antlers**



**Tavern**

**Est. 1938**

**2284 San Pablo Ave.**  
**Pinole, CA**

**(510) 724-9961**



900 San Pablo Ave., Pinole, CA 94564  
[www.CrockettsPremierAutoBody.com](http://www.CrockettsPremierAutoBody.com)

**(510) 741-9001**  
Fax (510) 741-9009

**November 3 program**

# TRAVEL THE DE ANZA NATIONAL HISTORIC TRAIL

**T**he Pinole Historical Society's final meeting of the year on November 3 will feature a representative from the National Park Service presenting a program on the Juan Bautista de Anza National Historic Trail, the exploration that changed the course of California's history.

The meeting will be held from 6:30 to 8 PM in conference rooms 2A and 2B of the Kaiser Permanente Medical Office Building, 1301 Pinole Valley Road. The public is invited to this free event. Refreshments will be served.

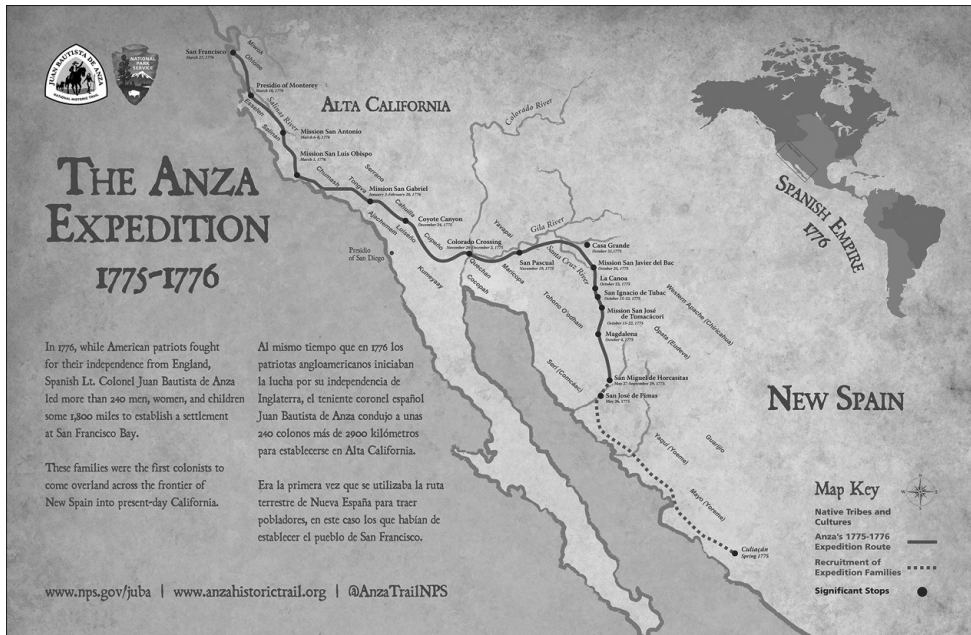
The 1,200-mile trail commemorates the Spanish colonial Anza Expedition of 1775-76 and the first

non-Native families to journey overland into California.

Today, the Anza Trail connects historic, cultural, and recreation sites across Arizona and California that reveal a legacy of the West's Hispanic heritage.

The Anza Trail connects Mexico to San Francisco, and the 18th century to the 21st. It invites travelers to experience the interweaving of the three elements of the Spanish plan for

the colonization of its northern frontier: presidios (military forts), missions (religious centers), and pueblos (civilian towns).



## THE ANZA EXPEDITION 1775-1776


In 1776, while American patriots fought for their independence from England, Spanish Lt. Colonel Juan Bautista de Anza led more than 240 men, women, and children some 1,800 miles to establish a settlement at San Francisco Bay.

These families were the first colonists to come overland across the frontier of New Spain into present-day California.

Al mismo tiempo que en 1776 los patriotas angloamericanos iniciaban la lucha por su independencia de Inglaterra, el teniente coronel español Juan Bautista de Anza condujo a unas 240 colonos más de 2900 kilómetros para establecerse en Alta California.

Era la primera vez que se utilizaba la ruta terrestre de Nueva España para traer pobladores, en este caso los que habían de establecer el pueblo de San Francisco.

[www.nps.gov/juba](http://www.nps.gov/juba) | [www.anzahistorictrail.org](http://www.anzahistorictrail.org) | @AnzaTrailNPS



**St. Joseph School**  
A Christ - Centered Community

**Mrs. Arlene Marseille, M.A.**  
Principal

1961 Plum Street      Ph 510-724-0242 ext. 1  
Pinole, CA 94564      Fax: 510-724-9886



**Lynda J. Bartels, Realtor®, CRS, GRI**  
**Coldwell Banker, Bartels-Realtors®**  
(510) 290-5666 Cellular  
bartels@aol.com      BRE 00662125  
[www.lyndajbartels.com](http://www.lyndajbartels.com)



**Kathy G. Ginocchio-Hill**  
**Coldwell Banker, Bartels-Realtors®**  
Broker Associate, Notary Public, ABR, e-PRO  
(510) 681-5940      BRE 01205079  
kginocchio@aol.com

Each office is independently owned and operated.

# SUGAR CITY

BUILDING MATERIALS CO.

PLANT

Darin De Tomasi

PINOLE 510-223-0610  
510-724-3412

**CHIYO SHIDARA DDS**

FORMERLY THE OFFICE OF  
DR. DOUGLAS J. GORDON

**FAMILY DENTISTRY**

**T(510) 741-7100**  
**F(510) 741-7335**  
**C(415) 699-5554**

**2150 APPIAN WAY STE 208**  
**PINOLE, CA 94564**



***The Pinole Historical Society promotes awareness and appreciation of history through preservation and education, and chronicles the city's heritage for current and future generations.***



**Western Contra Costa Transit Authority  
Celebrating 40 Years of Dedicated  
Public Transportation Service**

**1977-2017**

**601 Walter Avenue, Pinole, CA 94564  
(510) 724-7993  
www.westcat.org**



**"Bringing Homes To Life"**

Expertise, Honesty and Dedication make us your perfect partner in Real Estate.

**COMPLIMENTARY STAGING IF YOU LIST YOUR PROPERTY WITH US!\***



**Ricardo Velazco**  
Owner | Salesian Alumnus  
2221 Pear St., Pinole, CA 94564

510.283.5757 | Office  
510.367.3519 | Cell  
www.sequoia-eb.com

\* Restrictions Apply

**Why not  
advertise  
with us?  
Call  
(510) 724-9507  
or e-mail  
info@pinole  
historicalsociety.org  
for information  
and rates.**

## **THE NEWSLETTER GUY®**

**CUSTOM-WRITTEN AND DESIGNED NEWSLETTERS**  
FOR COMPANIES, NON-PROFITS AND ASSOCIATIONS  
ESTABLISHED 1981



**JEFF RUBIN**

1517 Buckeye Court  
Pinole, CA 94564

PHONE: 510/724-9507  
FAX: 510/741-8698  
E-MAIL: Jeff@TheNewsletterGuy.com  
WEB: www.TheNewsletterGuy.com



**CORNERSTONE  
CAPITAL SYSTEMS**

**George A. Egan, Certified Financial Planner™**  
Enrolled to practice before the Internal Revenue Service  
Registered Investment Advisor

3150 Hilltop Mall Rd., Suite 60  
Richmond, CA 94806

Phone: 510-412-1040  
Fax: 510-222-1367

Email: corcap1@pacbell.net

GEORGE A. EGAN, REGISTERED INVESTMENT ADVISOR, CA INS. LIC. #0719862



# Back in the day

**George R. Vincent**

## DEPOT DAYS IN OLD PINOLE

**R**ecently, a new photo of Pinole's long-gone Southern Pacific Railroad Depot appeared for sale on eBay.

The print, taken in 1940, shows the old building in its prime from a camera viewpoint not seen before.

Early Pinoleans regarded the depot building at the foot of Tennent Avenue as an essential town asset, as well as a landmark to introduce newcomers to the "Sun-kissed Gem by the Bay," as the city was later nicknamed by the Pinole Chamber of Commerce.

The Southern Pacific Railroad (formerly the Northern Railway) had come to Pinole in 1878.

It was located at the bay front near the Fernandez wharf and shipping complex called "Pinole Landing."

With the railroad came the classic trademarks of its stationhouses — yellow paint and a nearby palm tree.

It was this train depot and station stop that was to attract the California Powder Works (later Hercules Powder Company) to move to the adjacent waterfront area called Hercules. This plant provided jobs for much of Pinole's population, as well as bringing job seekers from afar, all of which disembarked at Pinole's depot.

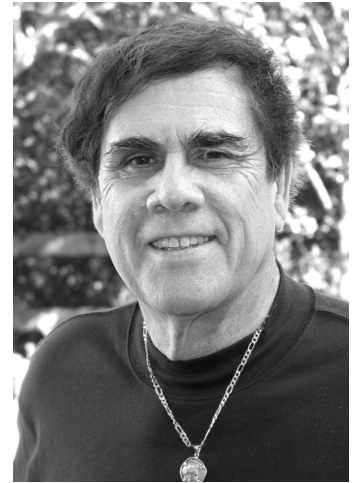
The depot area became a dynamic hub,

generating the growth of little Township #11, and the yellow, two-story station house was the center of activity.

Pinole travelers left the station to buy goods and foods in San Francisco. Chinese clam diggers with their bay homes on stilts shipped boxes of Pinole clams to the big city as well.

The expression "going to the depot" had a meaning of special pride to Pinoleans, who knew this site was a vital part of their community.

In 1889, young and talented Edward M. Downer of Nevada City became the new station agent, train dispatcher, and telegrapher at the Pinole depot. He had the



**George Vincent**

foresight to see the depot area as more than a train station and rails; he saw it as the nucleus of a new downtown moving up Tennent Avenue to the main street of San Pablo Avenue.

He opened a laundry agency at the depot, as well as Pinole's first post office — giving citizens additional reasons for "going to the depot."

The Fernandez Mansion was across the road from the depot. Downer and a young medical

*Continued on page 9*



[www.samsdoghouse.com](http://www.samsdoghouse.com)

### "BAY AREA'S BEST HOTDOG"

3857 San Pablo Dam Road  
El Sobrante, CA 94803  
(510) 223-8870



### Mike Rowland

Owner/Broker

License # 01331280

Business 510-222-9150

Cell 510-501-9133

Fax 510-222-9165

E-mail [MikeRowland@windermere.com](mailto:MikeRowland@windermere.com)



Windermere

Windermere Rowland Realty

3575 San Pablo Dam Road

El Sobrante, California 94803

[www.WindermereRowlandRealty.com](http://www.WindermereRowlandRealty.com)

## TENAX Law Group PC

145 PARK PLACE, SUITE A  
POINT RICHMOND, CA 94801  
T: 510.234.2808 F: 510.234.6009

Construction, real estate,  
personal injury, landlord-tenant,  
employment, bankruptcy, and  
business law.

[www.tenaxlawgroup.com](http://www.tenaxlawgroup.com)

ATTORNEYS

## Serious Injury • Auto Accident

### Donald E. Patterson

Attorney at Law

Plaza Two, Hilltop Office Park  
3260 Blume Drive, Suite 410  
Richmond, CA 94806

[www.donaldepatterson.com](http://www.donaldepatterson.com)



**FREE CONSULTATION (510) 262-2120**

# DEPOT DAYS IN OLD PINOLE

Continued from page 8

student, Manuel Fernandez, teamed up in 1894 to publish Pinole's first newspaper, *The Pinole Weekly Times*. The newspaper office was in a small building by the depot.

One of the depot's most important contributions to Pinole was the bringing of newcomers and families to live in the town.

In 1910, Nellie Aspland Medina Nichols arrived in Pinole from England at age nine.

At age 106, she remembered as a child getting off the train at the depot in a heavy rainstorm. The family was taken by the horse-and-buggy Walton's Livery taxi to their new home on Pinion Street.

Young Jessie Howe Clark, her husband, and baby daughter left Colorado Springs and



**The Southern Pacific Railroad Depot, with workers' cabins on the left, beyond the depot.**

de-trained at the Pinole depot in 1913. Jessie, a journalist, would later become the keeper and caretaker of Pinole's history.

She recalled walking up the board sidewalk from the depot and see-

ing large warehouses and a long wharf going into the bay. Also, she saw yellow smoke from the

Hercules Powder Company, where her husband would work.

*Continued on page 10*

## Saving Memories

Saving your most precious Family Video memories & photos on DVD is easy and inexpensive! Slide Shows help create a special atmosphere at Birthdays, Weddings, Memorials, Retirement & Anniversary Parties!

### Services include:

**Slide Shows, transfer of VHS, Beta, all size camcorder tape to DVD, Photo Editing. — 8, Super 8 & 16 MM film to DVD —**



Debbie Ojeda, owner  
ojedahouse@comcast.net

Call (510) 724-5197 [www.savingmemories.com](http://www.savingmemories.com)

Paula Harvey  
Susan Burch  
Christina Isley

Liz Tharpe  
Venessa McGhee

## TOP FLOOR SALON

Full-Service Salon

Full-body waxing • Makeovers  
Total hair care for men and women

1690 San Pablo Ave., Suite E  
Pinole, CA 94564

(510) 741-1150

**COLDWELL  
BANKER**

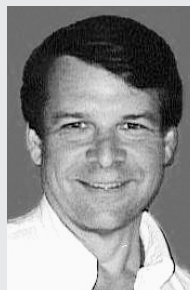
**BARTELS-REALTORS®**

## Your West County Residential Specialist Team

Prices are up and interest rates  
are still low.

Purchase with very low down payments. Our experience is your benefit. We listen to our clients, and you get the personal attention you deserve. No pressure — just service.

**Free market analysis of your home**

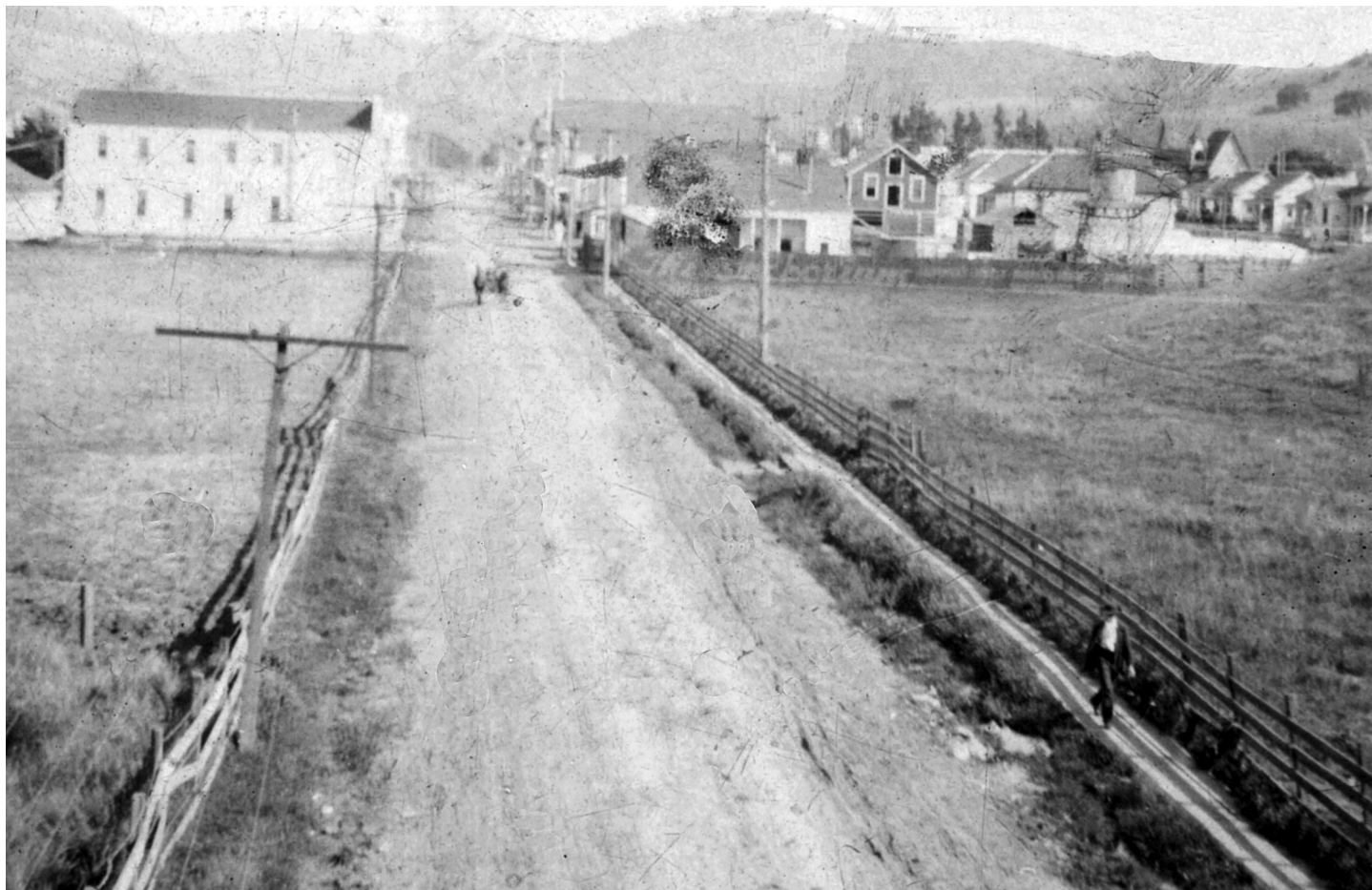


Joni Vasquez  
(510) 685-2162



Dave Vida  
(510) 517-7831





***TENNENT AVENUE LOOKING SOUTH, AROUND 1900. The Commercial Hotel is the large white building at the top left, where the Fernandez Park baseball field is today. Notice the horse-drawn carriage on the dirt road and the pedestrian walking on wooden boards toward the bay in the lower right corner.***

## DEPOT DAYS IN OLD PINOLE

*Continued from page 9*

Most importantly, as she walked on the board sidewalk toward town, she remembered the beautiful hills, heard a meadowlark singing, and knew right away, "I was going to like this town."

It was the depot that prompted the commercial growth of businesses alongside Tennent Avenue leading to downtown.

The Commercial Hotel, boarding travelers and Hercules workers, was where home plate at Fernandez Park's baseball field is today.

Across from the hotel was John Vincent's First

and Last Chance Saloon. It was named that because it was one's first chance for a drink coming off the train from the depot, as well as the last chance for a snort before returning to the depot.

For many years, the Southern Pacific Depot stood like a sentinel, proudly telling travelers they were in the city of Pinole and that the town's beginnings started at the depot.

I remember as a child the big clock in the stationmaster's office, playing in coal piles near the baggage area, and cool water from a large faucet by the platform.

We would sit on the

station platform watching the trains go by and waving to the hobos riding the rails for free.

At sunset on the bay you could see the outlines of duck blinds and the orange fishing boats from Joseph's Resort in Rodeo catching striped bass at the mouth of Pinole Creek.

The depot was a fun place for kids who loved trains and generously gave us a cold drink after a hot day of fishing.

The depot was once the heartbeat of Pinole. In 1958, Pinole lost its landmark. Sadly, the station was demolished, the palm tree cut down, and the Tony Enos home

nearby torn down. Today, only a vacant lot remains adjacent to the railroad crossing.

The depot was so dear to the culture of Pinole that many who remember it still honor the memory of this old yellow friend by the bay who helped them in "growing up Pinole."

The newly discovered photo of the depot accompanying this story came from down under in Australia.

Ironically, Pinole's depot was also down under — down at the foot of Tennent Avenue and under railroad semaphores and telegraph wires.



## MEMORIAL DONATIONS

Donations made  
"In Memory Of" or  
"In Honor Of"  
a special someone  
may be sent to:  
**Pinole Historical Society**  
P.O. Box 285  
Pinole, CA 94564

## ARTIFACTS DONATIONS

If you have any items of  
historical interest about  
Pinole to donate,  
please contact the  
Pinole Historical Society  
at:  
[info@pinolehistoricalsociety.org](mailto:info@pinolehistoricalsociety.org)  
or (510) 724-9507

## TAX-DEDUCTIBLE

As a 501(c)(3) non-profit  
corporation, all donations  
to the Pinole Historical  
Society are deductible as  
per the limits of the law.  
Thank you for considering  
donating to the  
Pinole Historical Society.



*In Old Town Pinole*

**2235 San Pablo Avenue,  
formerly Garden of Gems,  
just off Tennent Avenue next to  
the Pump House.**

**ANGEL (724-1454) AND  
MARY ARIAS (724-7510)**

## *You can help us preserve the history of Pinole*

**A**lways seeking to improve and add to the society's collection, the Pinole Historical Society welcomes inquiries from individuals owning objects which are significant to the history of Pinole.

Though we do not have a museum — we are preparing the Faria House on San Pablo Avenue as the site for the Pinole History Museum — we have exhibit spaces at the Pinole Library and conduct history programs for service organizations, retirement residences, and schools. Artifacts are an important part of these programs.

Please contact us at [info@pinolehistoricalsociety.org](mailto:info@pinolehistoricalsociety.org) or call (510) 724-9507 if you have an object you'd like to donate.

Also, you can view the numerous PHS programs right on your computer. Go to the city's website [www.ci.pinole.ca.us/about/videos.html](http://www.ci.pinole.ca.us/about/videos.html) and scroll down to PINOLE HISTORY.

## **Why not advertise with us?**

**Call (510) 724-9507 or e-mail [info@pinolehistoricalsociety.org](mailto:info@pinolehistoricalsociety.org) for information and rates.**

## **Full-Service Community Banking**

For You. Your Family. Your Business.

Pinole  
2690 Pinole Valley Rd.  
[MechanicsBank.com](http://MechanicsBank.com)  
MEMBER FDIC



## PINOLE VALLEY COMMUNITY CHURCH

A SAFE PLACE



510-758-9313  
[PVCCHAPEL@ATT.NET](mailto:PVCCHAPEL@ATT.NET)  
[WWW.PINOLEVALLEYCHURCH.ORG](http://WWW.PINOLEVALLEYCHURCH.ORG)

PASTOR JOHN WRIGHT

# PINOLE THROUGH TIME

MAIL TO: PINOLE HISTORICAL SOCIETY, P.O. BOX 285, PINOLE, CA 94564

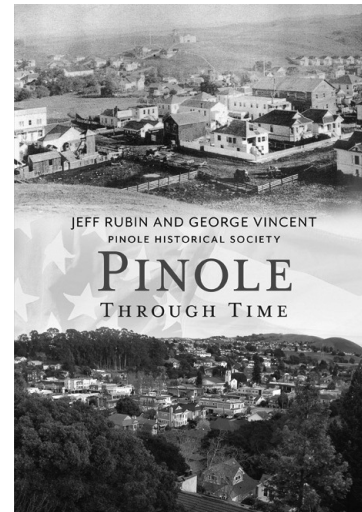
Name \_\_\_\_\_  
 Address \_\_\_\_\_  
 City \_\_\_\_\_ State \_\_\_\_ Zip \_\_\_\_\_  
 Phone (    ) \_\_\_\_\_ E-mail \_\_\_\_\_

# of books (\$30 per book, includes sales tax and postage) \_\_\_\_\_

**TOTAL: \$** \_\_\_\_\_

## METHOD OF PAYMENT

- Check: Payable to Pinole Historical Society  
 Credit card: ( Visa    MasterCard    American Express    Discover)  
 Credit card # \_\_\_\_\_  
 CVV \_\_\_\_\_ Expiration date \_\_\_\_\_



**Tina's Place**

"Simply A Great Meal"

Breakfast, Lunch, Dinner & Cocktails

**Dale Moore**

Proprietor

2300 San Pablo Ave  
 Pinole, Ca 94564  
 510-964-7546

tinasplace2.com

Tina's Place Facebook Fan Page

## GOT HISTORY?

The Pinole Historical Society  
 is grateful for donations  
 of artifacts, photos,  
 newspapers, memorabilia —  
 anything of historical  
 significance.

Please contact us  
 at

[info@PinoleHistoricalSociety.org](mailto:info@PinoleHistoricalSociety.org)  
 or call (510) 724-9507.

ENJOY YOUR FIRST

**3oz FREE**



2700 Pinole Valley Road  
 Pinole, CA 94564  
 (510) 758-9000



**Roofing by Frakes**

Richard Frakes

### GUTTERS

OG Gutters / Fascia Gutters  
 Removal and Installation

### ROOFING

New Work / Re-Roofs / Inspections  
 Tar & Gravel / Composition / Tile

**FREE Estimates**

Bonded & Insured • TEL 510-799-4474 • License #675791

**A.D.DERN INSURANCE  
 AGENCY, INC.**

Terry L. Tigh - Broker

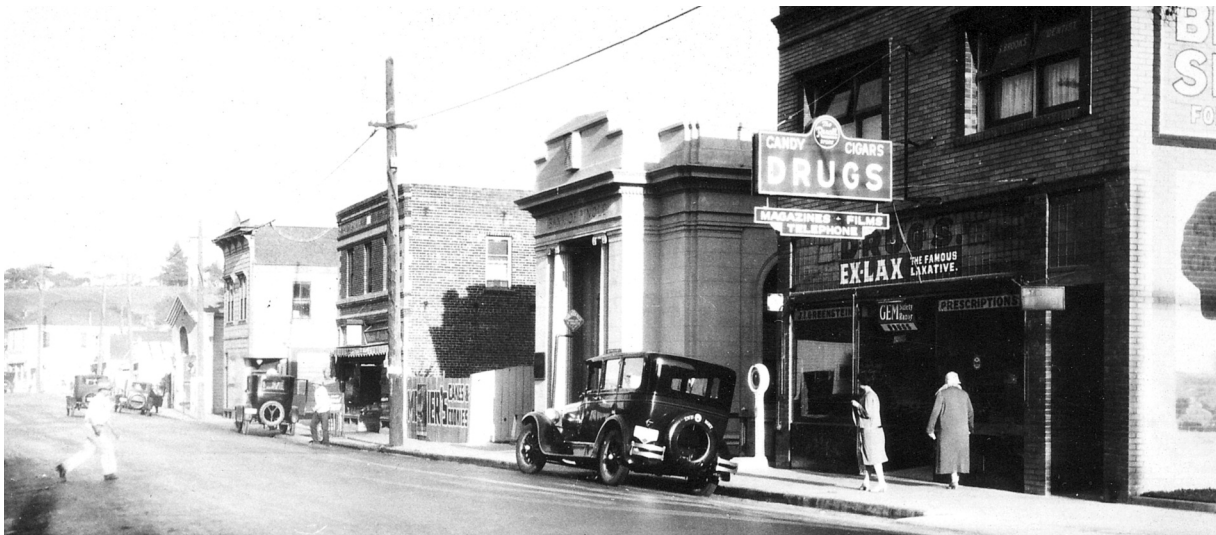
DOI Lic #0600833



2358 San Pablo Avenue  
 Pinole, CA 94564-1705

TEL (510) 724-6456  
 FAX (510) 724-6015

Email us at [WeCare@ADDern.com](mailto:WeCare@ADDern.com)  
[www.ADDERN.com](http://www.ADDERN.com)



## SUPPORT THE ACTIVITIES OF THE PHS BY BECOMING A MEMBER IN 2018

For only \$30, you can help the PHS accomplish its mission of bringing the history of Pinole to our residents through exhibits at the Pinole Library, Pinole history programs in schools, Pinole Community TV programs, walking tours of downtown Pinole, the Veterans Day event in Fernandez Park — and you'll have the satisfaction of helping promote and preserve Pinole's history for future generations.

**JOIN THE PINOLE HISTORICAL SOCIETY (OR RENEW YOUR MEMBERSHIP) AND HELP PROMOTE AND PRESERVE THE HISTORY OF OUR CITY.**

**Please mail the membership application in this newsletter today!**

### Why not advertise with us?

Call (510) 724-9507 or e-mail [info@pinolehistoricalsociety.org](mailto:info@pinolehistoricalsociety.org) for information and rates.

### BLUE SKY SPORTS

asi #141958

Serving Your Community Since 1980  
PROMOTIONAL ITEMS • SCREENPRINTING • EMBROIDERY • LETTERING • ENGRAVING  
INSTITUTIONAL & RECREATIONAL EQUIPMENT • UNIFORMS

In-House:

**Embroidery, Engraving, Screenprinting  
Banners, Photo Shirts, Batting Cages**  
corporate • team • industrial • individuals  
**1736 San Pablo Ave. Pinole 510-724-2583**



Serving The Bay Area  
Since 2001

### TMF Accounting Services

- **Income Taxes** (25% off)
- **Payroll**
- **Bookkeeping**

**Contact Us Today!**

**510.455.4597**

[www.tmfaccountingservices.com](http://www.tmfaccountingservices.com)

### Pinole Paws Pet Grooming

Deborah Jordan, Owner  
National Certified Master Groomer  
(510) 724-8785

971 C San Pablo Ave.  
Pinole, CA 94564  
[www.pinolepaws.net](http://www.pinolepaws.net)



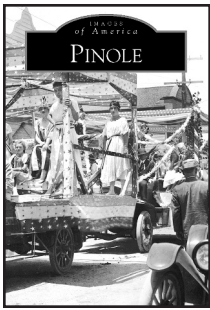
### Gary Lalley

Insurance and Financial Services Agent

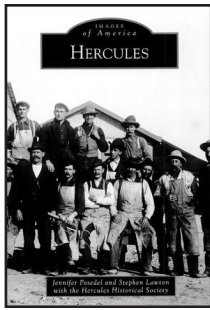
2800 Pleasant Hill Road, Suite 210  
Pleasant Hill, CA 94523  
Tel 510.724.7070 Cell 925.408.2166  
[glalley@farmersagent.com](mailto:glalley@farmersagent.com)  
CA #0125344

Registered Representative, Farmers Financial Solutions, LLC  
30801 Agoura Road, Bldg. 1, Agoura Hills, CA 91301-2054  
Tel 818.584.0200 Member FINRA & SIPC

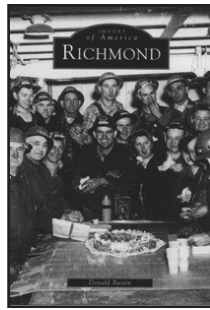




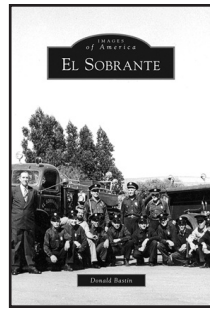
**Pinole**



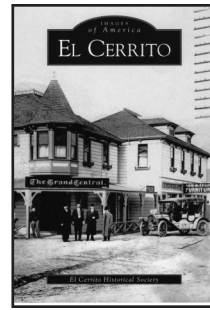
**Hercules**



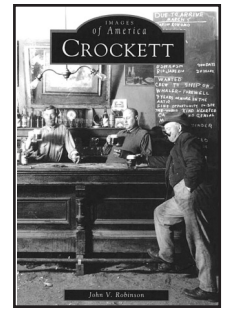
**Richmond**



**El Sobrante**



**El Cerrito**



**Crockett**

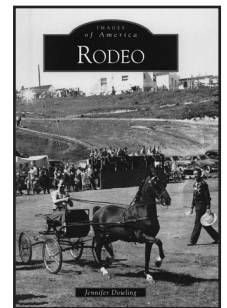
# LOCAL HISTORY BOOKS AVAILABLE FROM THE PINOLE HISTORICAL SOCIETY

The Pinole Historical Society sells Arcadia books about Pinole, Hercules, Richmond, El Sobrante, El Cerrito, Crockett, Rodeo, Martinez, Port Costa, and Maritime Contra Costa County at the Pinole Farmers' Market every other Saturday through December.

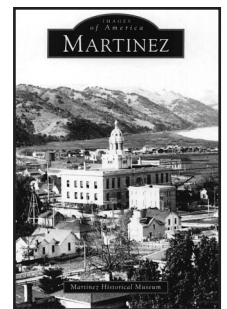
The Pinole, Hercules, Richmond, El Sobrante, El Cerrito, and Maritime Contra Costa County

books are \$24, including sales tax. The Crockett, Rodeo, Martinez, and Port Costa books are \$22, including sales tax.

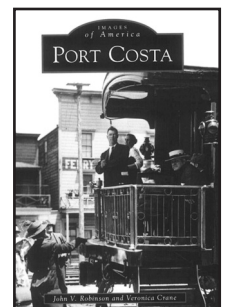
Or, you may order one or more by mail. See the mail-order form below for instructions. We now accept credit cards.



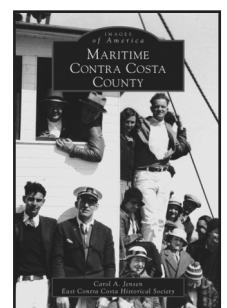
**Rodeo**



**Martinez**



**Port Costa**



**Maritime**

Name \_\_\_\_\_

Address \_\_\_\_\_

City \_\_\_\_\_ State \_\_\_\_ Zip \_\_\_\_\_

Phone ( ) \_\_\_\_\_

E-mail \_\_\_\_\_

## METHOD OF PAYMENT

**Check:** Payable to Pinole Historical Society

**Credit card** ( Visa  MasterCard  Amex  Discover)

Card # \_\_\_\_\_ CVV \_\_\_\_\_ Expiration date \_\_\_\_\_

# of Pinole books @ \$27 (book, sales tax, postage) \_\_\_\_\_

# of Hercules books @ \$27 (book, sales tax, postage) \_\_\_\_\_

# of Richmond books @ \$27 (book, sales tax, postage) \_\_\_\_\_

# of El Sobrante books @ \$27 (book, sales tax, postage) \_\_\_\_\_

# of El Cerrito books @ \$27 (book, sales tax, postage) \_\_\_\_\_

# of Maritime Contra Costa County books @ \$27 (book, sales tax, postage) \_\_\_\_\_

# of Crockett books @ \$25 (book, sales tax, postage) \_\_\_\_\_

# of Rodeo books @ \$25 (book, sales tax, postage) \_\_\_\_\_

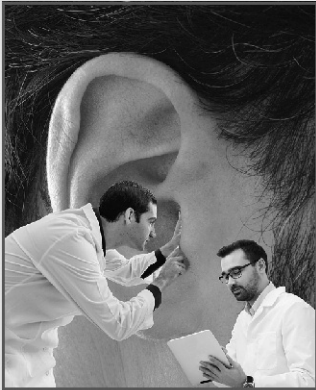
# of Martinez books @ \$25 (book, sales tax, postage) \_\_\_\_\_

# of Port Costa books @ \$25 (book, sales tax, postage) \_\_\_\_\_

TOTAL AMOUNT ENCLOSED \$ \_\_\_\_\_

**Please mail your order to  
PINOLE HISTORICAL SOCIETY, P.O. Box 285, PINOLE, CA 94564**

# PINOLE HEARING AID CENTER



- FREE** >>> Electronic hearing screening by our Licensed Hearing Professional.
- FREE** >>> Ear Scan, you will see your ear canal on a color monitor with the use of our computer video camera.
- FREE** >>> Bring in your own hearing aids! They will be cleaned and assessed. A trade in may be available!



Joel C. Ross, M.D., ENT  
Ear Nose and Throat Specialist  
Board Certified Otolaryngologist



Laura Dundas, Au.D., CCC-A  
Audiologist



Terry Tegeler  
BC - HIS  
Board Certified  
Hearing Instrument Specialist  
Lic #HA6017



**PINOLE**  
HEARING AID CENTER

1700 San Pablo Ave., Suite F  
Pinole, CA 94564

**510-724-1095**

[www.pinolehearing.com](http://www.pinolehearing.com)

Se Habla Español

## Pinole **Historical** Society 2018 MEMBERSHIP APPLICATION

(PINOLE RESIDENCY NOT REQUIRED FOR MEMBERSHIP)

**PLEASE PROVIDE THE FOLLOWING INFORMATION AND SEND THIS FORM  
TO PINOLE HISTORICAL SOCIETY, P.O. BOX 285, PINOLE, CA 94564**

MEMBERSHIPS ARE FOR THE 2018 CALENDAR YEAR (EXCEPT LIFETIME MEMBERSHIPS)

NAME: (each member): \_\_\_\_\_

ADDRESS: \_\_\_\_\_

CITY/STATE/ZIP \_\_\_\_\_

PHONE: ( ) \_\_\_\_\_

E-MAIL (please!): \_\_\_\_\_

CIRCLE ONE: Annual-new (\$30)    Annual-renewal (\$30)    Business (\$50)    Life (\$150)

METHOD OF PAYMENT:  Check (Payable to Pinole Historical Society)

Credit Card:     Visa     MasterCard     American Express     Discover

Credit Card # \_\_\_\_\_ Expiration Date \_\_\_\_\_ CVV \_\_\_\_\_

TOTAL ENCLOSED: \_\_\_\_\_

# SPECIAL OFFERS FROM OUR ADVERTISERS

Clip these coupons for great savings

NOW OPEN!

## ZIO'S

### PASTA PRONTO

1473 Fitzgerald Drive | Pinole  
ziospasta.com | 510.223.ZIOS (9467)

Open seven days a week! 11:30am - 9pm

**10% off**

with this coupon.  
Expires 5/31/2017. Limit one coupon per order. Cannot combine with any other discounts or offers. (Pinole Location Only)

Monday to Wednesday

**\$5 off** Any \$20 Purchase.

Expires 5/31/2017. Limit one coupon per order. Cannot combine with any other discounts or offers. (Pinole Location Only)

Also visit us at our other locations:  
23 Harbor Way, Vallejo  
611 Gregory Lane, Pleasant Hill



Massage by Michelle  
Stuff your stocking  
with the gift of  
**RELAXATION!**



• 60-minute deep tissue or Swedish massage: \$55

(1 coupon per client — offer good through January 31, 2018)

GIFT CERTIFICATES AVAILABLE AT [MASSAGEBYMICHELLEG.COM](http://MASSAGEBYMICHELLEG.COM)



Michelle Gonzalez, C.M.T.

925.899.4811

Swedish, Deep Tissue, & Foot Reflexology

[www.massagebymichelleg.com](http://www.massagebymichelleg.com)

Book Online

Located inside Hercules Fitness • 600 Alfred Nobel Drive • Hercules

**Taqueria Sanchez**

Serving Pinole since 1999

Buy one entrée, receive second entrée  
of equal or lesser value 50% off

2400 San Pablo Avenue, Pinole, Located in the Park View Plaza

Follow us on Facebook to see our daily FB Special.

[www.facebook.com/pages/Taqueria-Sanchez](http://www.facebook.com/pages/Taqueria-Sanchez)

CATERING AVAILABLE (510) 741-8622



*Ristorante due Rose*  
CUCINA ITALIANA



Best of the Bay – KRON-TV

☆☆☆☆☆

4 Forks – West County Times

10% OFF LUNCH OR DINNER  
WITH THIS COUPON

PEDRO CANJURA, Proprietor (510) 223-5620  
1596 Fitzgerald Drive Fax: (510) 223-5634  
Pinole, CA 94564 [ristorantedueros.com](http://ristorantedueros.com)

**Oliver's Hardware**

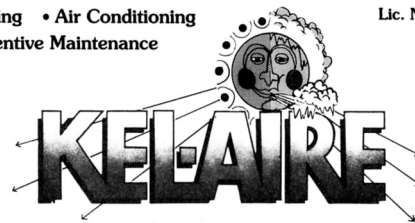
4071 San Pablo Dam Road  
El Sobrante, CA 94803  
Phone: (510)-223-4450  
FAX: (510)-223-1924

**ACE**  
The helpful place.

**Richard Oliver**  
Owner Store #922  
[olivershardware@gmail.com](mailto:olivershardware@gmail.com)

• Heating • Air Conditioning  
• Preventive Maintenance

Lic. No. 303947



4 Parker Avenue, Rodeo, CA 94572-1119  
Tel. (510) 245-4140 • Fax (510) 799-1725  
(888) Kel-Aire • (888) 535-2473 • E-mail: [info@kelaire.com](mailto:info@kelaire.com)